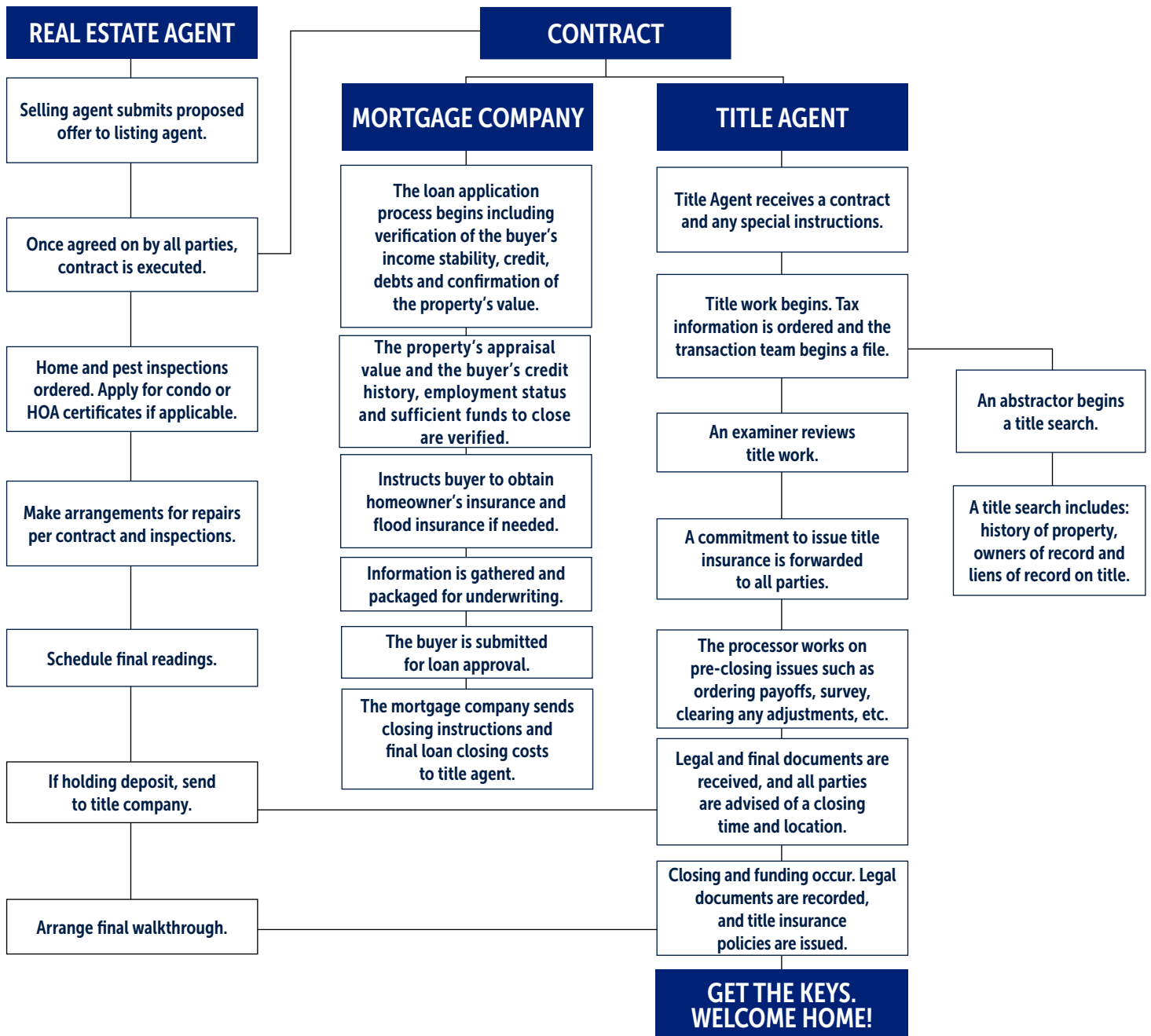


STEPS OF THE CLOSING PROCESS

FROM CONTRACT TO KEYS

PRESIDENTIAL TITLE

Commercial & Residential Settlements



PRESIDENTIAL TITLE

Commercial & Residential Settlements

Daniel Hodin
President

4800 Hampden Lane
6th Floor
Bethesda, MD 20814

dhodin@paleyrothman.com

O: 301.951.9374

D: 301.951.9373

presidentialtitle.com